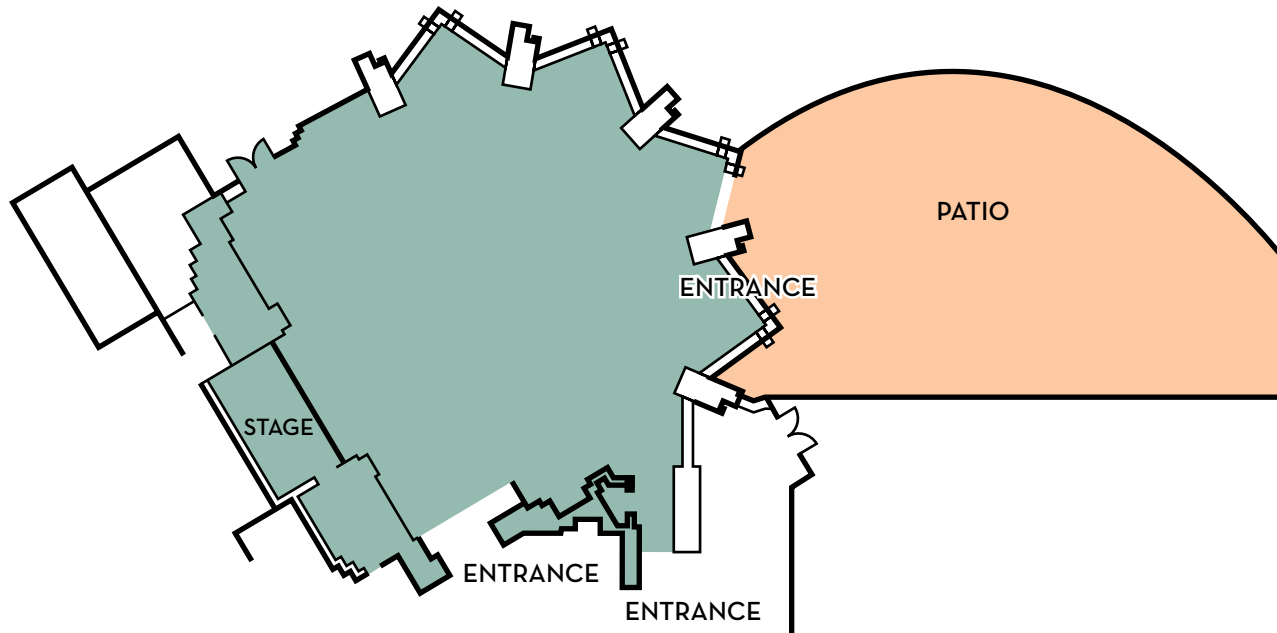




Meetings & Conferences



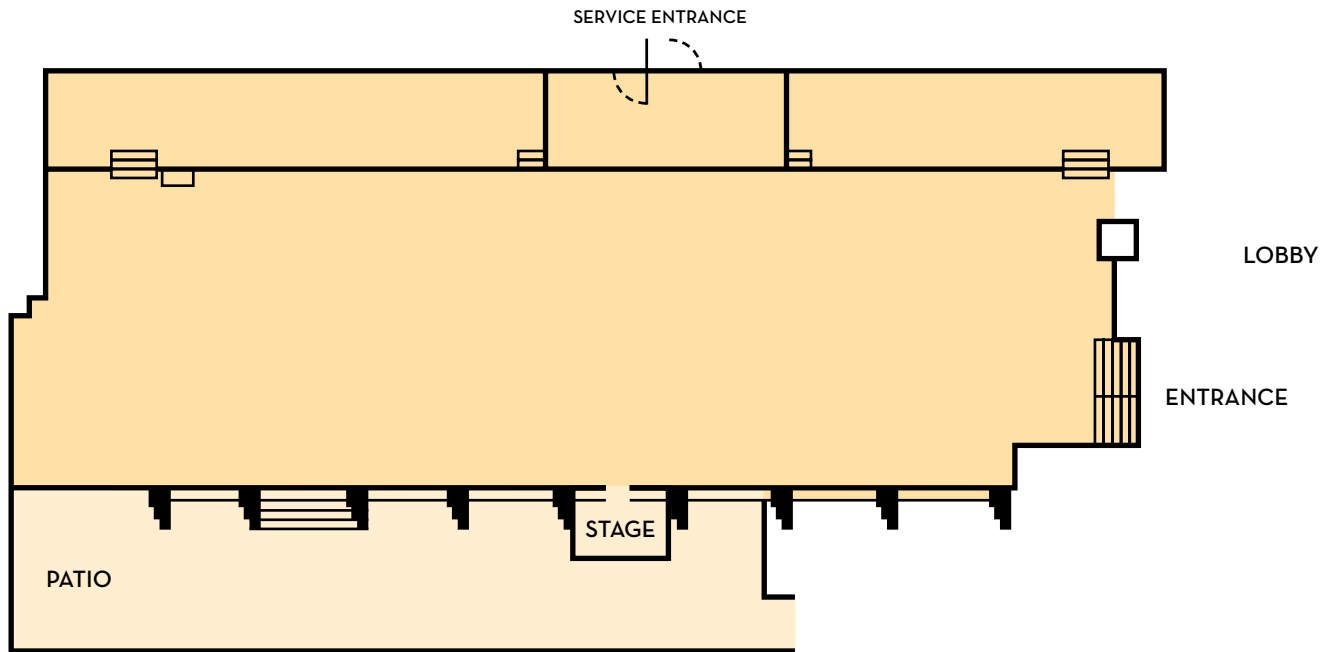
Aztec Room & Patio



	Reception	Banquet Seating	Dinner/Dance	Theater Seating	Classroom Seating	"U" Shape (Outside) Seating	Hollow Square Seating	Conference Table Seating	Width	Length	Total Square Feet	Ceiling Height
Aztec Room	200	150	120	220	150	40	45	30	53'	44'	3,740	10'*
Aztec Patio	300	200							50'	60'	3,000	SKY

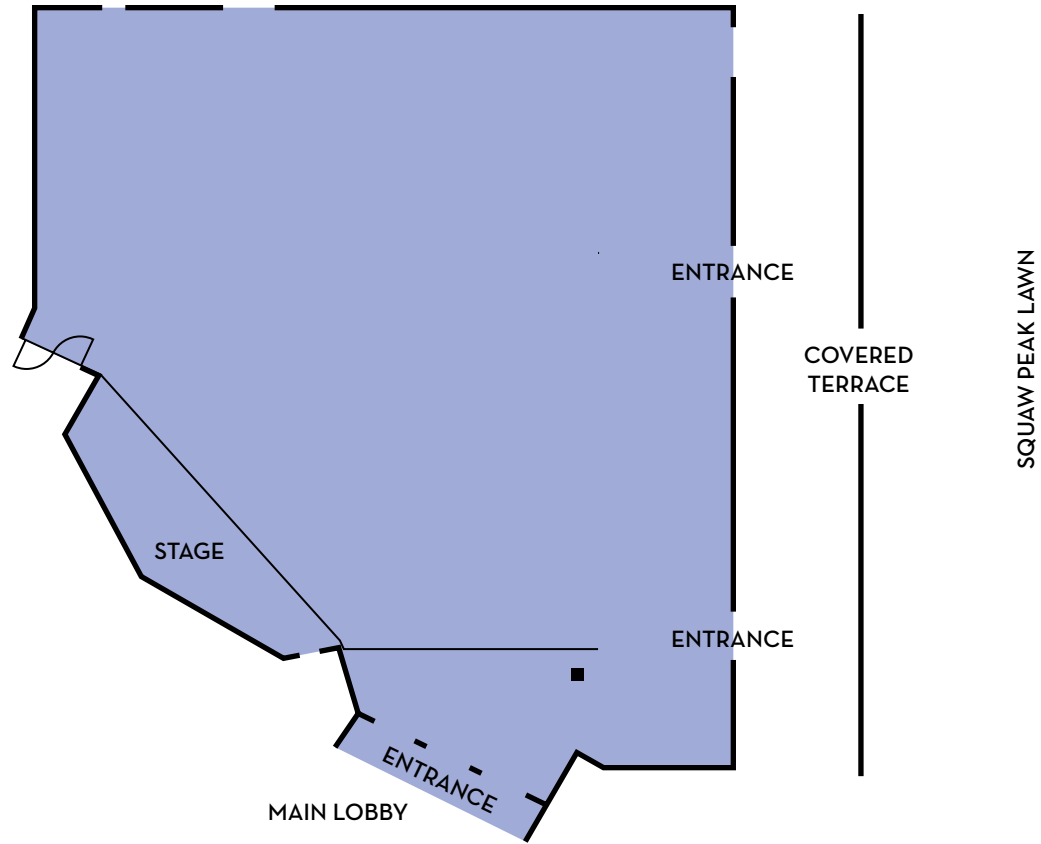
*Ceiling height at lowest point.

Gold Room & Patio



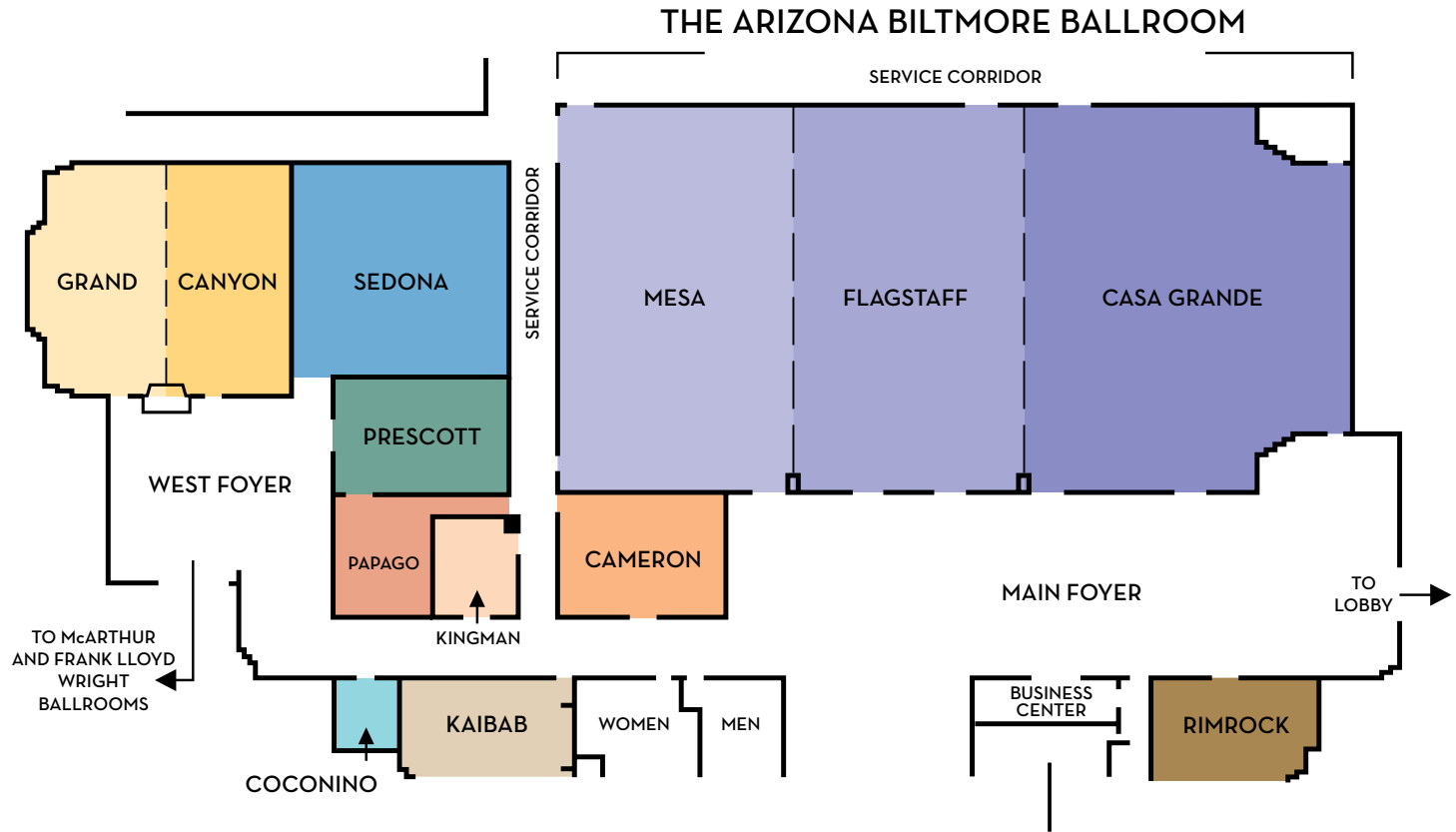
	Reception	Banquet Seating	Dinner/Dance	Theater Seating	Classroom Seating	"U" Shape (Outside) Seating	Hollow Square Seating	Conference Table Seating	Exhibit 10x10	Exhibit 8x8	Width	Length	Total Square Feet	Ceiling Height
Gold Room	490	350	300	400	250			20	28	54'	130'	7,083	13'4"*	
Gold Room Patio	180	150								95'	21'	1,995	SKY	

Grand Ballroom



	Reception	Banquet Seating	Dinner/Dance	Theater Seating	Classroom Seating	"U" Shape (Outside) Seating	Hollow Square Seating	Conference Table Seating	Exhibit 10x10	Exhibit 8x8	Width	Length	Total Square Feet	Ceiling Height
Grand Ballroom	500	440	380	550	320	50	65	28	40	89'	82'	7,298	94"*	

*Ceiling height at lowest point.

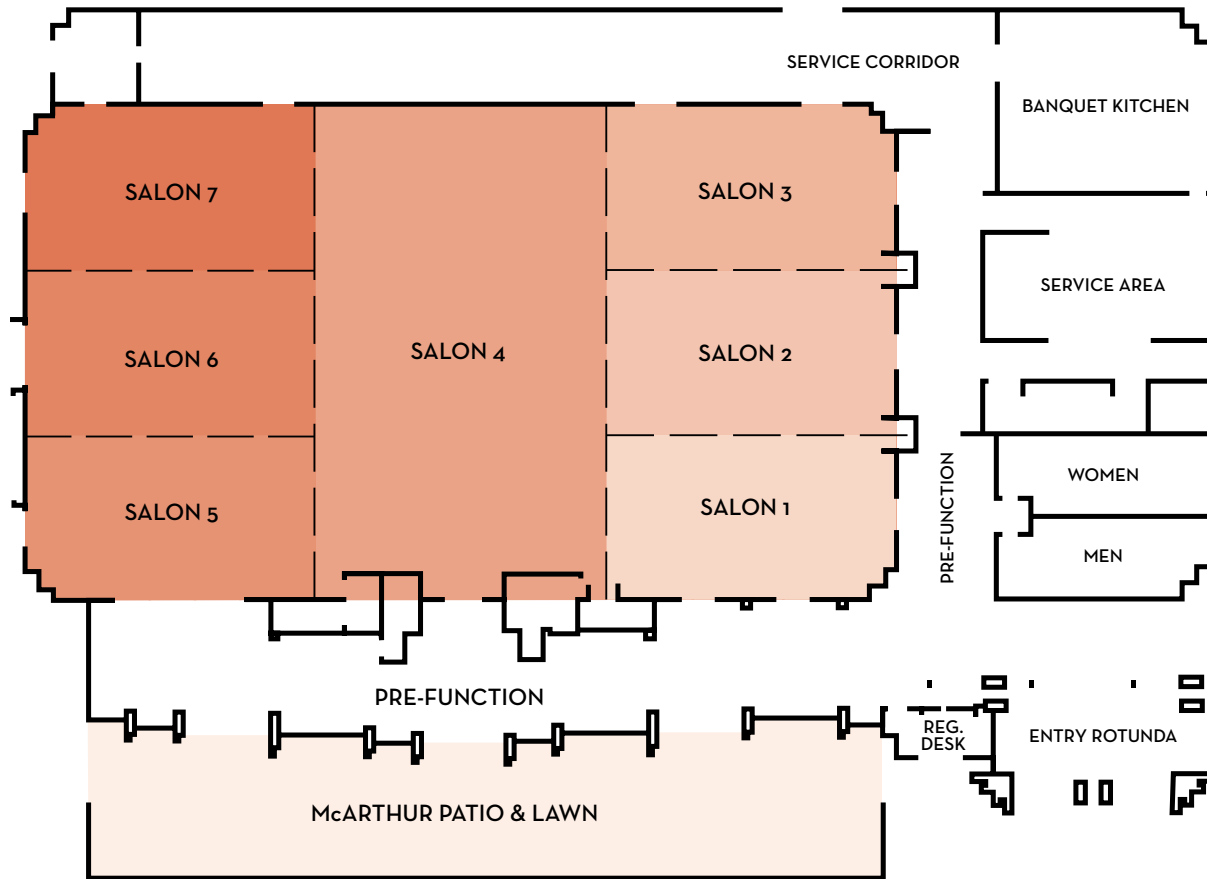


Conference Center (cont.)

	Reception	Banquet Seating	Dinner/Dance	Theater Seating	Classroom Seating	U" Shapes (Outside) Seating	Hollow Square Seating	Conference Table Seating	Exhibit 10x10	Exhibit 8x8	Width	Length	Total Square Feet	Ceiling Height
Arizona Biltmore Ballroom	1,000	820	660	1,000	655				50	73	74'	151'	11,174	16'10"
Main Foyer	940										44'	128'	5,632	10'1"
Flagstaff & Casa Grande	860	520	480	750	430	110	130		34	51	74'	107'	7,918	16'2"
Mesa & Flagstaff	800	480	440	725	380	110	130				74'	89'	6,586	16'2"
Casa Grande	460	260	240	360	220	55	65		19	29	74'	62'	4,588	16'2"
Flagstaff	400	240	200	340	210	55	65				74'	45'	3,330	16'2"
Mesa	400	240	200	340	210	55	65				74'	44'	3,256	16'2"
Grand Canyon	220	160	120	200	120	45	55	45			48'	44'	2,112	9'
West Foyer	120										33'	42'	1,386	10'1"
Grand	140	60	40	70	50	30	36	25			24'	44'	1,056	9'
Canyon	140	60	40	70	50	30	36	25			24'	44'	1,056	9'
Sedona	180	120	100	150	100	36	40	35			34'	39'	1,326	8'3"
Cameron	60	50		60	35	25	30	23			31'	23'	713	7'10"
Prescott	60	50		60	35	25	30	25			32'	22'	704	7'10"
Kaibab	40	30		40	25	23	20	20			20'	30'	600	7'4"
Rimrock	40	30		40	25	23	26	20			20'	28'	560	7'10"
Papago	35	20		30	20	18	20	16			23'	18'	414	7'10"
Kingman	20	12		18	15	8	10	10			16'	18'	288	7'4"
Coconino		6						4			12'	11'	132	6'6"

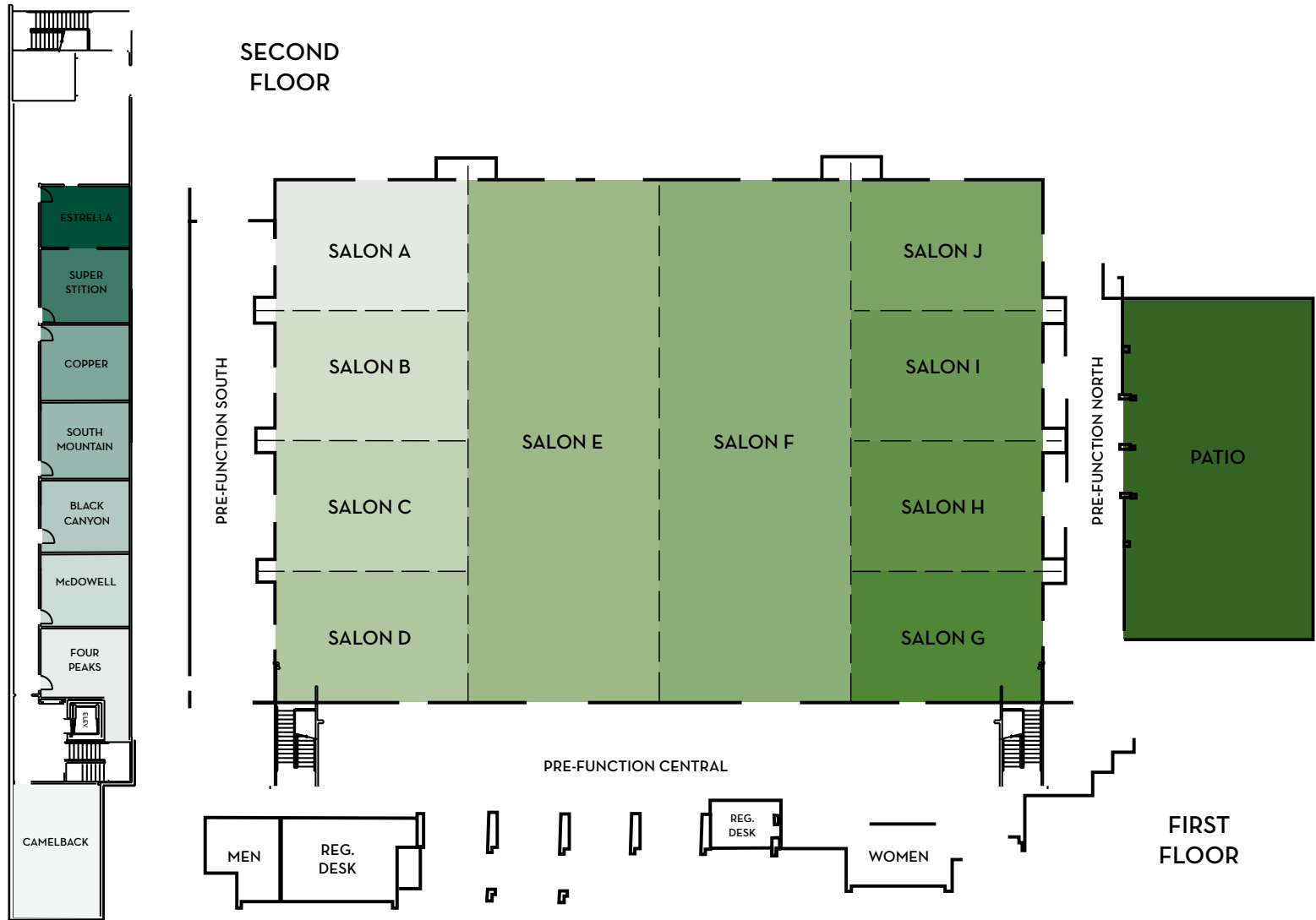


McArthur Ballroom



	Reception	Banquet Seatings	Dinner/Dance	Theater Seating	Classroom Seating	"U" Shape (Outside) Seating	Hollow Square Seating	Conference Table Seating	Exhibit (10x10)	Exhibit 8x8	Width	Length	Total Square Feet	Ceiling Height
McArthur Ballroom	1,500	1,220	1,010	1,650	1,080	171	204	142	66	96	92'	162'	14,904	18'
McArthur 1, 2, 3, 5, 6 or 7	165	130	110	182	114	36	42	40			31'	55'	1,705	17'10"
McArthur 1/2, 2/3, 5/6 or 6/7	330	280	220	360	216	72	88	58			62'	55'	3,410	17'10"
McArthur 1-3, 4 or 5-7	500	400	330	520	324	108	108	82	22	36	93'	55'	5,115	17'10"
McArthur 1-4 or 4-7	1,000	880	660	1,100	714	123	156	94	38	64	92'	107'	9,844	17'10"
Pre-function													6,248	
McArthur Patio & Lawn	500	400									65'	125'	7,000	

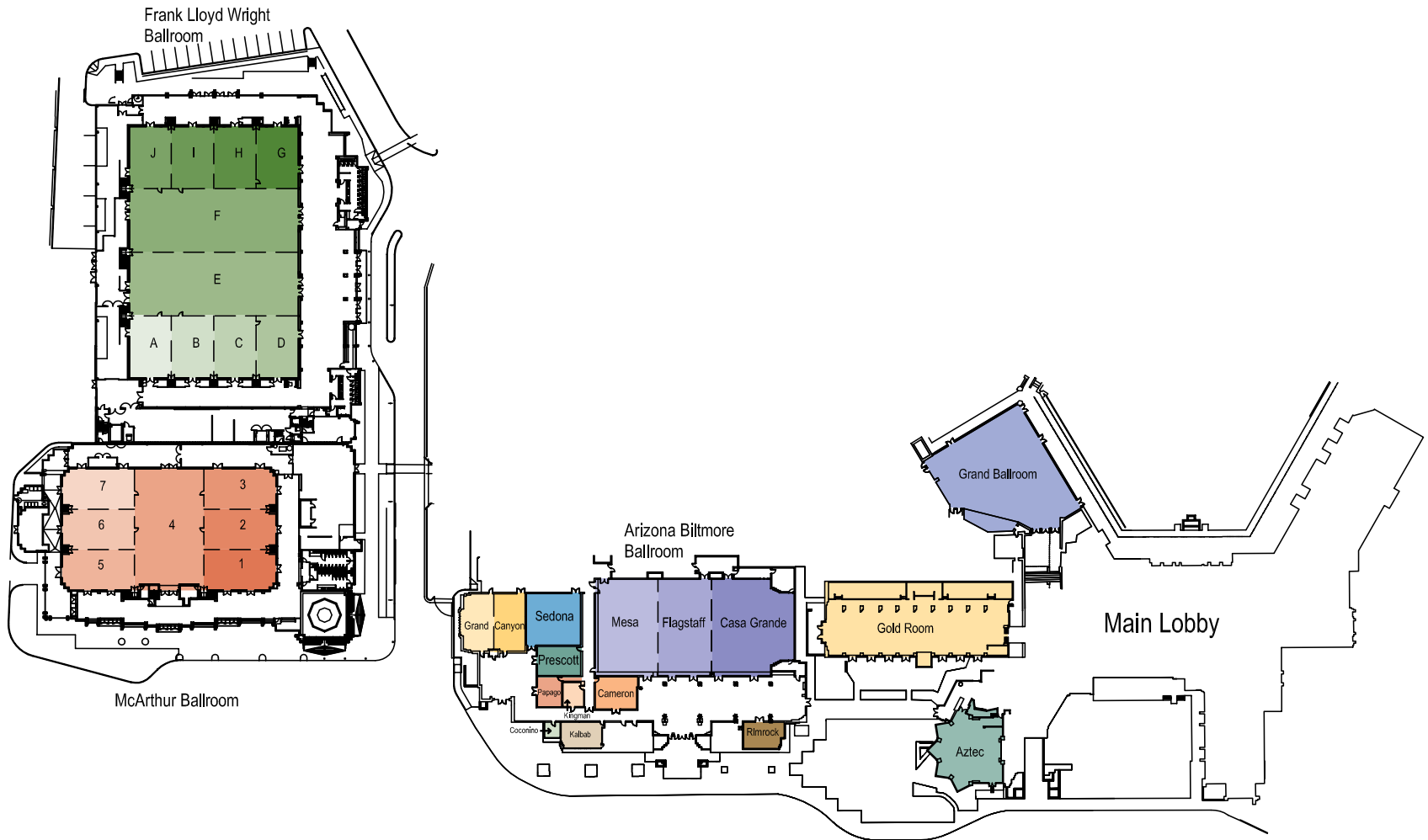
Frank Lloyd Wright Ballroom



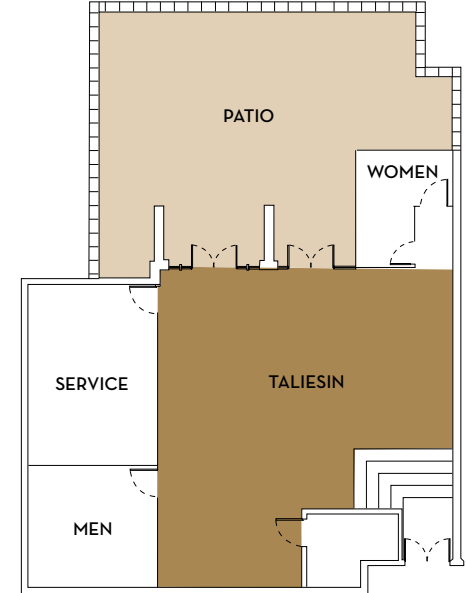
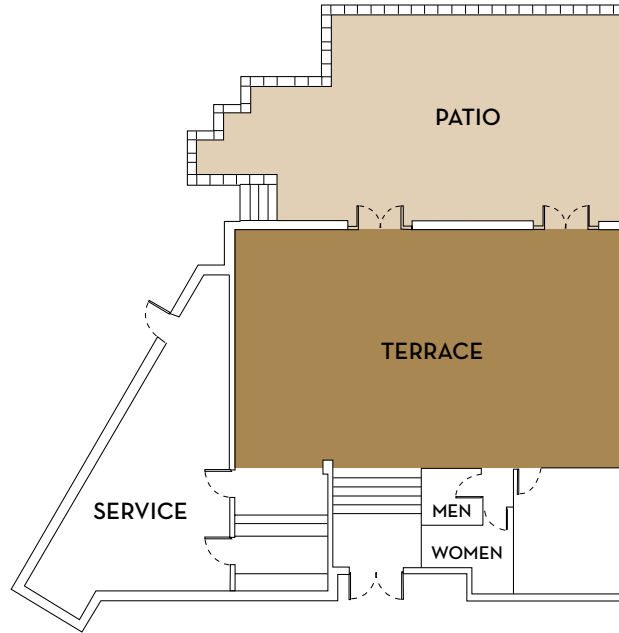
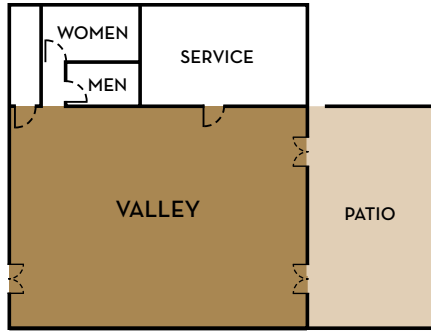
Frank Lloyd Wright Ballroom (cont.)

	Reception	Banquet Seating	Dinner/Dance	Theater Seating	Classroom Seating	"U" Shape (Outside) Seating	Hollow Square Seating	Conference Table Seating	Width	Length	Total Square Feet	Ceiling Height
FIRST FLOOR												
Frank Lloyd Wright® Ballroom	2,400	1,980	1,600	3,120	2,052	231	282	172	128'	192'	24,576	20'
FLW A, B, C, D, G, H, I, J (1 sec)	150	120	100	195	108	45	54	40	32'	47'	1,504	20'
FLW AB, CD, GH, IJ (2 sec)	300	240	200	390	216	72	84	52	64'	47'	3,008	20'
FLW BC, HI (2 sec)	300	240	200	390	216	72	84	52	65'	47'	3,055	20'
FLW A-C, H-J (3 sec)	450	360	300	585	360	102	114	88	96'	47'	4,512	20'
FLW B-D, G-I (3 sec)	450	360	300	585	360	102	114	88	97'	47'	4,559	20'
FLW A-D, G-J (1/4)	600	480	400	780	432	132	150	118	128'	47'	6,016	20'
FLW E or F (1/4)	600	480	400	780	432	132	150	118	128'	47'	6,016	20'
FLW E and F	1,200	960	800	1,560	1,064	156	192	118	128'	96'	12,288	20'
FLW A-E, EF, F-J (1/2)	1,200	960	800	1,560	1,064	156	192	118	128'	96'	12,288	20'
FLW A-E, E-J (3/4)	1,800	1,430	1,200	2,340	1,392	183	240	130	128'	145'	18,560	20'
Pre-function Space											10,789	
SECOND FLOOR												
Estrella		10		20	12	10	12	12	14'	19'	259	8'
Superstition		10		20	12	10	12	12	16'	19'	293	8'
Copper		10		20	12	10	12	12	16'	19'	293	8'
South Mountain		10		20	12	10	12	12	16'	19'	293	8'
Black Canyon		10		20	12	10	12	12	16'	19'	293	8'
McDowell		10		20	12	10	12	12	16'	19'	293	8'
Four Peaks		10		20	12	10	12	12	16'	19'	293	8'
Camelback		30		50	40	25	28	28	23'	26'	573	8'

Arizona Biltmore Main Building Meeting Space



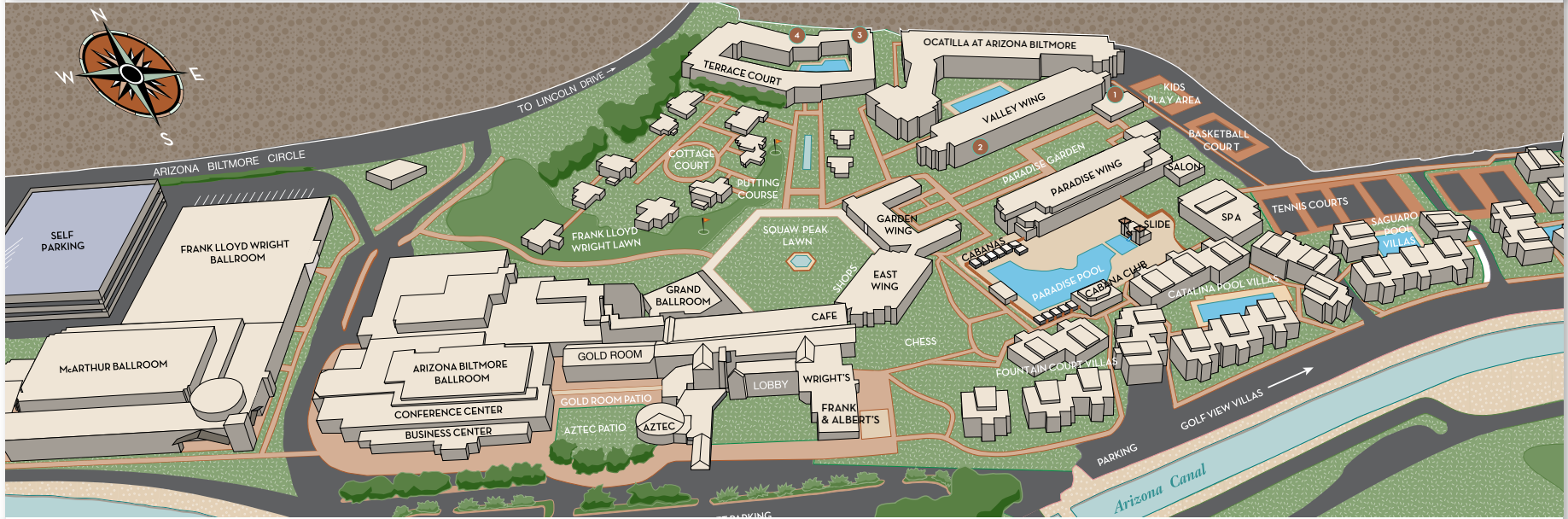
Terrace Court and Valley Wing Meeting Space - Valley, Terrace and Taliesin



	Reception	Banquet Seating	Dinner/Dance	Theater Seating	Classroom Seating	"U" Shape (Outside) Seating	Hollow Square Seating	Conference Table Seating	Width	Length	Total Square Feet	Ceiling Height
Valley Room	100	90	60	125	80	30	40	35	44'	33'	1,452	7'*
Valley Patio	50	60									2,093	10'*
Hohokam							14		18'	26'	468	7'*

	Reception	Banquet Seating	Dinner/Dance	Theater Seating	Classroom Seating	"U" Shape (Outside) Seating	Hollow Square Seating	Conference Table Seating	Width	Length	Total Square Feet	Ceiling Height
Terrace	60	60		80	50	25	35	25	27'	42'	1,134	9'2"*
Taliesin	60	50		70	40	22	28	25	26'	32'	832	9'2"*

Arizona Biltmore Map



THERE IS A PLACE FOR YOU WITHIN HER TIMELESS STORY.

It started on February 23, 1929, when it opened as the “Grand Dame” of Arizona. It continued with every wide-eyed guest that saw it as the glorious “Jewel of the Desert.” And it is still being written today with every delightful moment of recreation and relaxation. We invite you to become a part of the Arizona Biltmore legacy. Call today to make your arrangements.

	Sq. Ft.	Seating		Sq. Ft.	Seating
Cottage Court	4,200	200	Paradise Pool	8,000	300
Chess Lawn	2,700	120	Frank Lloyd Wright Lawn	10,550	500
Paradise Garden	10,000	350			
Squaw Peak Lawn	14,000	900			

Terrace Court and Valley Meeting Space

1. Valley Room
2. Hohokam
3. Taliesin
4. Terrace