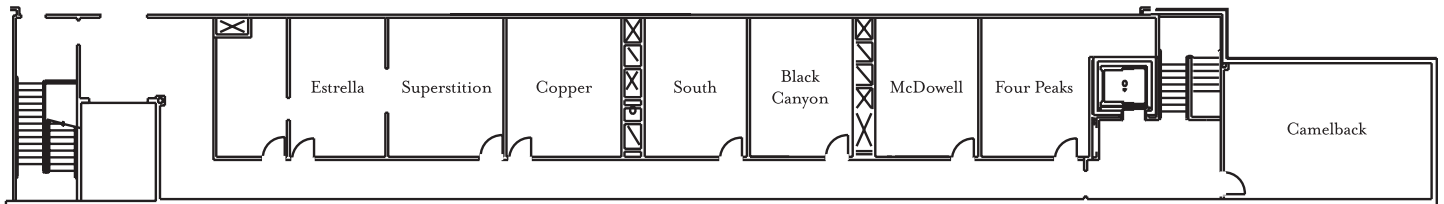


# Frank Lloyd Wright® Ballroom



	Reception	Banquet Seating	Dinner/Dance	Theater Seating	Classroom Seating	"U"-Shaped (Outside) Seating	Hollow-Square Seating	Conference Table Seating	Width	Length	Total Square Feet	Ceiling Height
<b>Frank Lloyd Wright® Ballroom</b>	2,400	1,980	1,600	3,120	2,052	231	282	172	128'	192'	24,576	20'
FLW A, B, C, D, G, H, I, J (1 sec)	150	120	100	195	108	45	54	40	32'	47'	1,504	20'
FLW AB, CD, GH, IJ (2 sec)	300	240	200	390	216	72	84	52	64'	47'	3,008	20'
FLW BC, HI (2 sec)	300	240	200	390	216	72	84	52	65'	47'	3,055	20'
FLW A-C, H-J (3 sec)	450	360	300	585	360	102	114	88	96'	47'	4,512	20'
FLW B-D, G-I (3 sec)	450	360	300	585	360	102	114	88	97'	47'	4,559	20'
FLW A-D, G-J (1/4)	600	480	400	780	432	132	150	118	128'	47'	6,016	20'
FLW E or F (1/4)	600	480	400	780	432	132	150	118	128'	47'	6,016	20'
FLW E and F	1,200	960	800	1,560	1,064	156	192	118	128'	96'	12,288	20'
FLW A-E, EF, F-J (1/2)	1,200	960	800	1,560	1,064	156	192	118	128'	96'	12,288	20'
FLW A-F, E-J (3/4)	1,800	1,430	1,200	2,340	1,392	183	240	130	128'	145'	18,560	20'
Pre-function Space											10,789	
Estrella									14'	19'	259	
Superstition									16'	19'	293	
Copper									16'	19'	293	
South									16'	19'	293	
Black Canyon									16'	19'	293	
McDowell									16'	19'	293	
Four Peaks									16'	19'	293	
Camelback									23'	26'	573	

## Meeting planner office space 2nd Floor



Figures show the maximum comfortable capacity and do not include consideration for audiovisual, staging, buffet lines, displays, etc.